

CartRite® Wireless Pick-To-Light Cart



The **CartRite®** Wireless Cart operates on a standard Microsoft Windows platforms. **CartRite®** is the perfect solution for applications with large numbers of medium-to-slow moving SKUs. The **CartRite®** system offers low-cost, accurate, high-speed picking for areas not equipped with a pick-to-light system – **CartRite®** perfectly handles the 80% of your products that constitute 20% of your volume. The system combines computer controlled loose or split case picking with batch processing. **CartRite®** controls batch picking into shipping cartons or totes by directing users to the proper warehouse location for each pick and indicating the quantity required for each carton/tote. The system's intelligent light modules with alphanumeric displays support simultaneous loose and pack picking.

Via the full-size Windows display on the portable PC, **CartRite®** directs the user to the proper product pick location and indicates the quantity to pick for that batch. For maximum efficiency, batch picks can be displayed on the screen in units, packs or cases as applicable. The put light modules at each cart location indicate the quantity of that product to be put into each carton/tote in the batch. For example, the system can direct the picker to pick one case (of 24 pieces) and then put eight pieces into each of three orders.

Operation is simple: First the operator creates a batch by inducting the cartons/totes representing the orders into the proper positions on the cart. A hand-held scanner makes carton induction and location confirmation easy.

The system then directs the picker to the first pick location by displaying the location and quantity to pick on the cart's PC display. The picker confirms the pick location using the scanner and picks the quantity specified. For applications that require positive confirmation of picks, the system can be configured to require product and/or lot confirmation via the scanner.



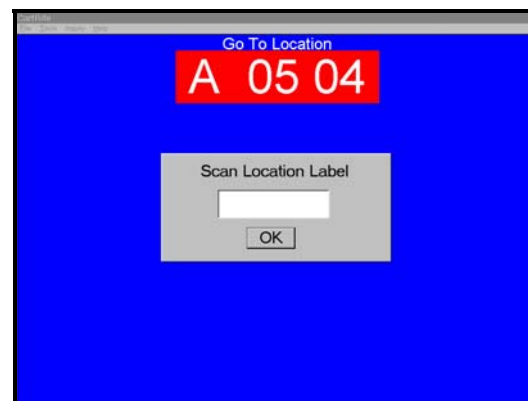
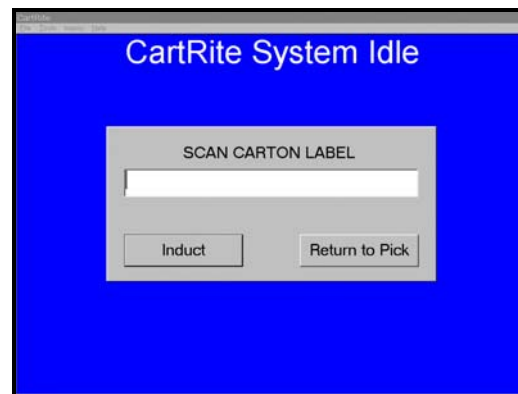
The Batch Put Indicator Modules at each carton/tote location on the cart then display the quantities to be put into each carton/tote (such as **UNIT 012**). Where packs and units are picked simultaneously, the modules display the number of **Packs** and **Units** required for each carton/tote (such as **P04 U012**).



Real-time, RF-communication with the central processor keeps track of the status of the picks and maintains inventory levels. The **CartRite®** system is designed to operate continuously for a full work day on a single charge.

CartRite® System Highlights

- **Improved Speed/Accuracy** – Increases both picking speed and accuracy when picking large numbers of medium-to-slow moving SKUs. Automatic order batching further increases productivity.
- **Local Control** – Portable PC with Windows and the *CartRite®* System application. PC features the current Pentium processor and full-color display.
- **Communication Link** – RF-communication allows the cart to receive orders from and transmit pick/inventory status back to the order control system. RF-Network Adapter connects to PC via a PCMCIA Slot.
- **Hand-Held Scanner** – Used for pick/induct control, carton induction, location confirmation, and logging on. No manual key entries are required during normal operations. Optional cordless scanner available.
- **Batch Carton/Tote Locations** – One light module per batch location. Standard carts typically handle from 6 to 16 modules/locations.
- **Light Modules** – Batch Put Indicator (BPI) modules with integral microprocessors, alpha-numeric displays and Complete/Short push-button switches provide immediate response and control. Carton Close switch available.
- **Path Efficiency** – Once the orders that comprise a batch are inducted onto the cart, the system analyzes the required picks and displays the picks in warehouse location sequence to minimize picker travel time.
- **Warehouse/Product Locations** – Unlimited number of warehouse locations supported by the central order control/warehouse management system.
- **Power Supply and Batteries** – A single control unit provides signal and power to the light modules on the cart as well as to the Portable PC. The maintenance free, sealed batteries provide at least 8 hours of continuous operation without recharge. Intelligent charger maintains battery life.
- **Product and/or Lot Validation** – System can be configured to require pickers to provide positive confirmation of the product and/or lot pick by scanning the product's bar code.
- **Fixed Tote Identification** – System can be configured to support/track totes with fixed or permanent identifiers.
- **System Integrity** – From the locator system to the light modules, the *CartRite®* System uses components that have been installed in hundreds of pick-to-light and warehouse management systems. Reliability is guaranteed as built-in diagnostics run every time the unit is turned on.
- **Easy-To-Read Screens** – Simple full-color displays direct picker operations at all times.



CartRite® is a registered trademark of CAPE Systems, Inc.
Microsoft® and Microsoft Windows® are registered trademarks of the Microsoft Corporation.
Intel® and Pentium® are registered trademarks of the Intel Corporation.